

**Facing global  
challenges:  
International  
collaboration as a  
prerequisite for  
relevant education  
and research**

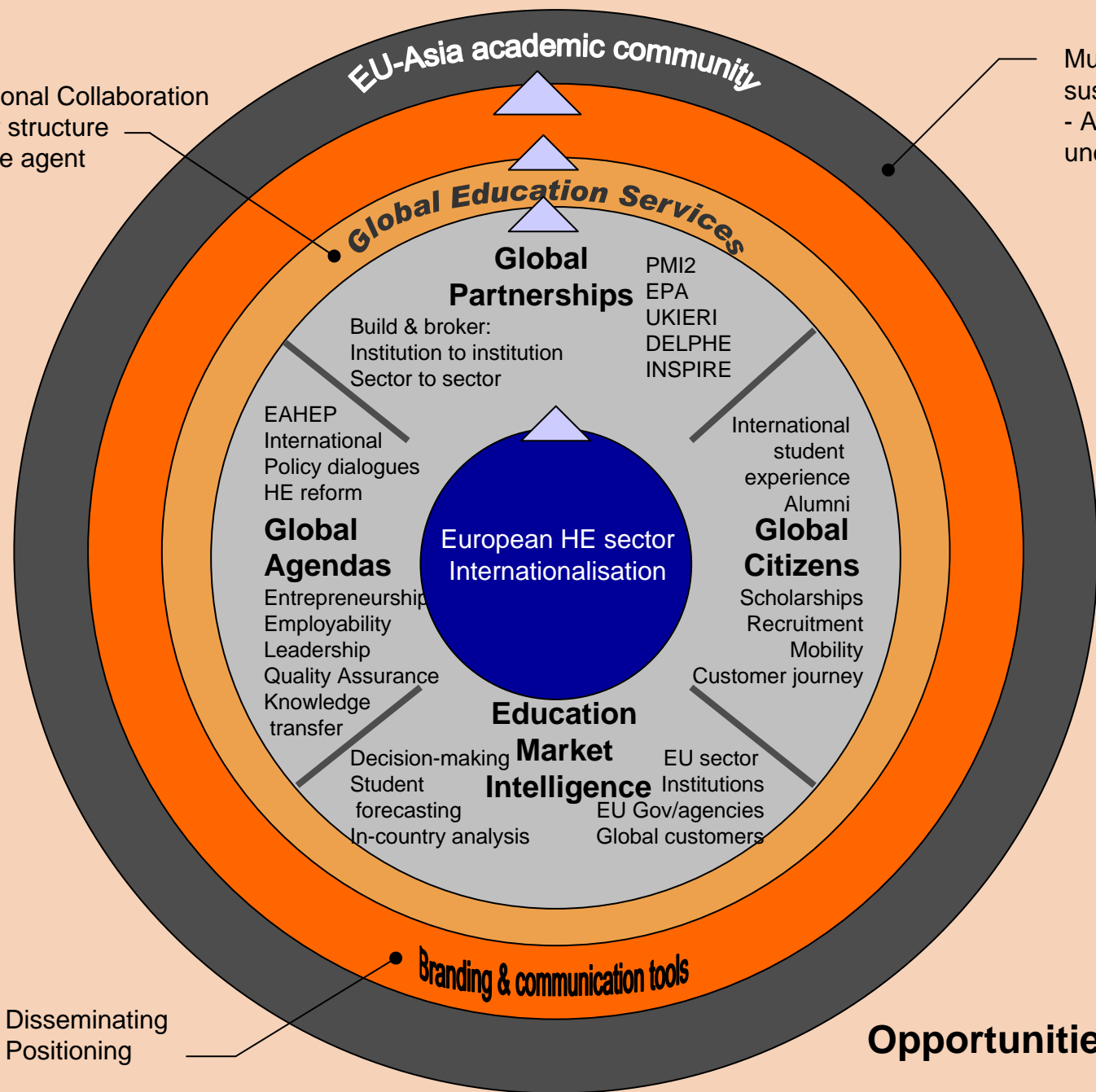
# Global Challenges

- Global challenges – Global responses
- Cultural relations – building trust through the exchange of knowledge and ideas to inspire and lead a new generation of global citizens
- An international education experience can develop global networks, with a unique capacity to deliver sustainable relationships, promoting the skills, creativity and innovation to participate internationally



International Collaboration  
Delivery structure  
- Change agent

Mutually beneficial and sustainable partnerships  
- Alignment of partners understanding



EU-Asia academic community

Global Education Services

Global Partnerships

Build & broker:  
Institution to institution  
Sector to sector

PMI2  
EPA  
UKIERI  
DELPHE  
INSPIRE

EAHEP  
International  
Policy dialogues  
HE reform

Global Agendas

Entrepreneurship  
Employability  
Leadership  
Quality Assurance  
Knowledge transfer

European HE sector  
Internationalisation

Education Market Intelligence

Decision-making  
Student forecasting  
In-country analysis

EU sector  
Institutions  
EU Gov/agencies  
Global customers

International student experience  
Alumni

Global Citizens

Scholarships  
Recruitment  
Mobility  
Customer journey

Branding & communication tools

Opportunities and challenges

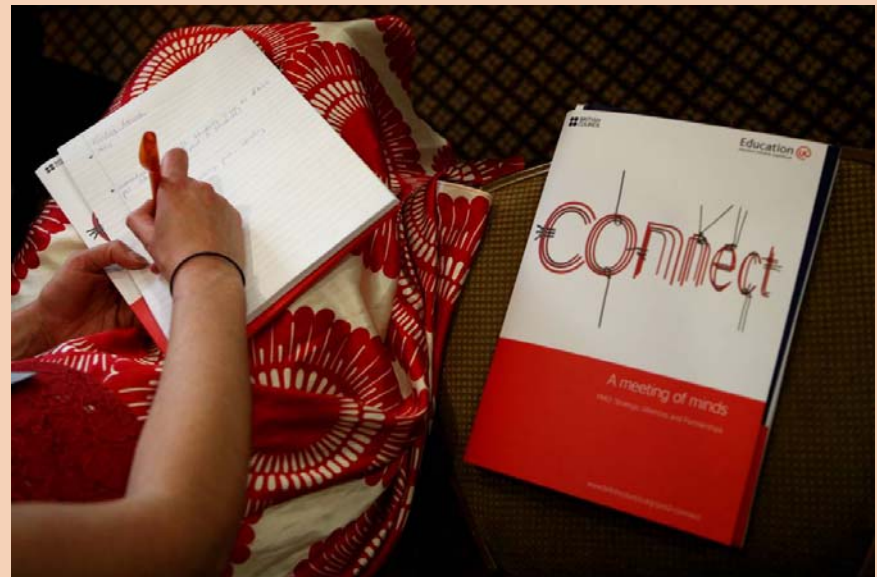
Disseminating  
Positioning

## Opportunities - PMI2 funding

- To position HEIs as a “partner of choice”
- Engaging with countries at two levels:

A role at:

1. Government & policy level
2. Sector & institutional level



# What has been funded under PMI2 Connect?

	<i>Total projects funded</i>	<i>Thailand</i>
Research Co-operation in South East Asia	86	12
UK-Pakistan Research Co-operation	9	
UK- Gulf States Research Co-operation	14	
Collaborative Programme Delivery	14	<i>bidding open</i>
International Mobility of Students	53	5
China-UK Collaborative Partnerships in Entrepreneurship & Employability	22	
Partnership development grants	46	3
<b>Approx: £4.8 million funding 244 projects</b>		



## Policy Dialogues

- **The Entrepreneurial University**, March 08, Sri Lanka
- **Universities in a Globalised World**, March 08, Japan
- **Student Mobility in East Asia**, Feb 08, Thailand
- **Education, Employability and the Creative Industries**, Oct 07, Indonesia
- **Transnational Education**, March 07, Malaysia
- **International Education and Employability**, Feb 07, Vietnam

Reports and proceedings – [www.britishcouncil.org/pmi2-connect](http://www.britishcouncil.org/pmi2-connect)

# Challenges

Previously funded partnerships

[britishcouncil.org/pmi2-connect](https://britishcouncil.org/pmi2-connect)

**Common challenges that have emerged:**



- **The meaning of project themes within a different culture**
- **Different emphasis on how and where transferable skills are learnt**
- **Technology – Communication channels**
- **Embedding internationalisation more deeply across HEIs in both regions**
- **Developing sustainable collaborations beyond the initial funding**

## Who to contact



- For Higher Education related queries:  
[john.law@britishcouncil.org](mailto:john.law@britishcouncil.org)

Thank you